

## RENOVATION OF J. G. MENDEL'S APIARY

Vladimir Ptacek

Masaryk University, Faculty of Science, Kotlarska 2, 611 37 Brno, Czech Republic  
e-mail: ptacek@sci.muni.cz



**Fig. 1** J. G. Mendel (July 20, 1822 - Jan. 9, 1884)

As is well known, the discoverer of genetic laws - J. G. Mendel - was also an active scientist in apiculture. He tried to find out the best way of wintering productive colonies, conducted experiments with mating queens and selected drones in a cage, and compared productivity and characters of different honey bee races. Mendel even observed and wintered a colony of *Trigona* sting-less bees. He presented his results mainly on meetings of the committee of the Moravian Beekeeper's Union, of which he was a member. Mediated information about his results occurred in the beekeeping magazine *Včela Brněnská* (*Die Honigbiene von Brünn*).

Mendel (1822-1884) lived in the city of Brno in the southeastern part of what is now the Czech Republic. As an abbot of the Old Brno Augustinian Monastery he had a lot of duties but nevertheless he built a nice apiary within the area of the abbey. It was constructed according to the latest knowledge

of Mendel's time and has two manipulation rooms and the space for placing 15 hives. Behind the house there is a cellar for indoor wintering of colonies. Three original hives and two copies made in early 1960s remain in the bee-house till now. Unfortunately, the originals are mostly rotten. The building itself, the front wall of the cellar as well as the fence surrounding the area needs fundamental renovation, urgently.

On the 180<sup>th</sup> anniversary of Mendel's birth an excellent exhibition called "The genius of genetics" was opened in the Old Brno Abbey on May 15, 2002, and an international workshop of top scientists in the field took place on this occasion.

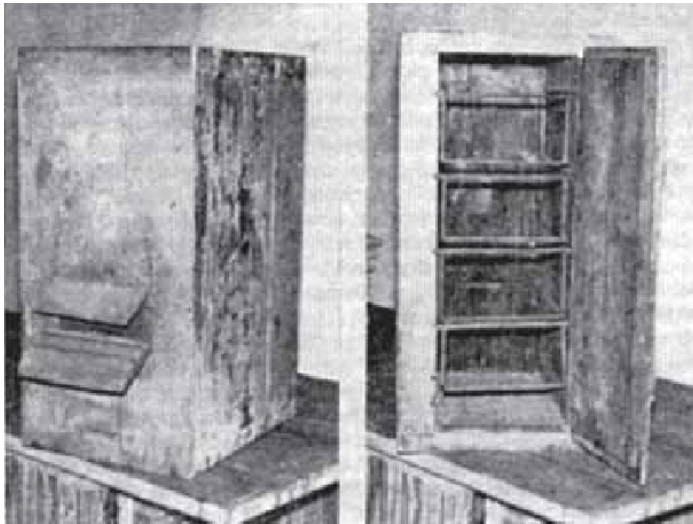
Because Mendel was an active member of the beekeeper's union, the beekeepers of Brno have taken part in the renovation of the apiary, which naturally belongs to Mendel's heritage. The plan is for it to become an educational site showing the basic knowledge about the life of the honey bee, the kinds of hives from Mendel's time till now, as well as the various ways of beekeeping. As a beginning, colonies in modern magazine hives were placed in the area surrounding the bee house, which itself has to be reconstructed first.

The beekeepers of Brno will be grateful for any material support in their activities. For any (urgently needed) sponsorship contact please the author of the article.

**Keywords:** Mendel, apiary, apiculture.

### ACKNOWLEDGEMENTS

The presentation was possible thanks to the support of the Masaryk University of Brno, grant No. CEZ: J07/98:143100010.



**Fig. 2** Moravian hive from Mendel's time



**Fig. 3** The bee room inside with the old hives (right), all is waiting for conservation and renovation



**Fig. 4** The modern hives making the apiary living again



**Fig. 5** Mendel's experimental garden. Right is situated the entrance to the exhibition

## ODTWORZENIE PASIEK J. G. MENDLA

### P t a c e k V .

#### S t r e s z c z e n i e

Odkrywca praw genetycznych J. G. Mendel był także aktywnym badaczem pszczelarstwu. Wyniki dwóch obserwacji przedstawiał głównie na spotkaniach Morawskiego Związku Pszczelarzy. Swoją pasiekę, w postaci pawilonu mieszczącego 15 uli posiadał w Brnie na terenie klasztoru Augustynów. Podczas obchodzonej w roku 2002, 180 rocznicy urodzin Mendla, pszczelarze z Brna podjęli decyzję o odtworzeniu jego pasieki w kształcie w jakim istniała za jego czasów.

**Słowa kluczowe:** Mendel, pasieka, pszczelarstwo.